



GeoHub NI™ IS A WEB BASED PLATFORM TO FACILITATE SHARING, USING AND DEVELOPING GEOGRAPHIC INFORMATION FOR NORTHERN IRELAND.

The goal of the GeoHub is to provide every public servant with access to the appropriate Geographic Information (GI), seamlessly, from their desktop, to better inform policy development and service delivery.

PUBLIC AND PRIVATE SECTORS INPUT SPATIAL DATA



GEOGRAPHIC INFORMATION (GI) OUTPUT

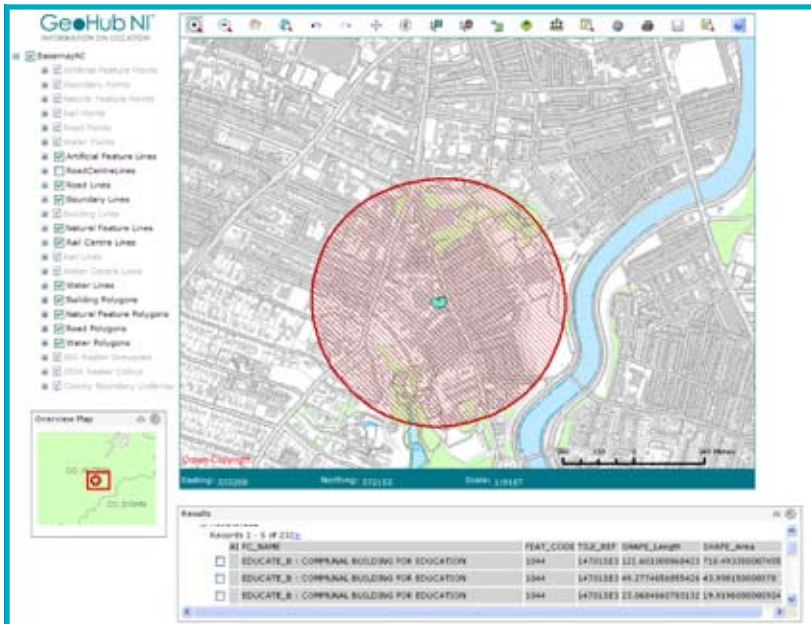
SHARE

DEVELOP

USE

Key features:

- Spatial data warehouse of Northern Ireland developed using market leading database and Geographical Information System (GIS) technology.
- Map viewing and GIS capability.
- Capable of integrating data from most common GI formats.
- Developed in line with open standards of geographic data and systems.
- Comprehensive data rights management system. This allows data providers to control the level of access to their data.
- Stores searchable metadata to the UK GEMINI standard.
- Will act as a central store for Government spatial data.



All buildings identified within 200m of a green urban area

Core Benefits:

Effective use of resources and financial savings

- Ability to share data across other departments and out to the public.
- Free access to web based introductory GIS software.
- Reduces duplication of effort in data capture.

Better informs policy making and decision making

- Improved policy decisions through better information.
- Improved operational decisions through better information
- Better quality of GI data.
- Wider range of GI information.

Enables Govt Departments to comply with the EU spatial data directive — INSPIRE

- Providing public access to particular GI datasets falling under the EU INSPIRE Directive on spatial data.

Better Service to Citizen

- Gives citizens free access to Government held GI data.
- Quicker and more informed decisions improve the citizens' experience of interacting with Government.

Development Partners:

1. Fujitsu Services Ltd
2. 1Spatial
3. ESRI

Background Info: GeoHub and the GI Strategy for Northern Ireland

The Northern Ireland Executive committed itself to developing a GI strategy.

The core premise of this strategy is to encourage the effective use of GI throughout government in Northern Ireland to:

- Deliver better services
- Manage resources more effectively and efficiently
- Inform policy decisions

The idea to create a GeoHub originated from the steering group that was established to realise this GI Strategy for Northern Ireland.

CONTACTS

GeoHub NI

Victor Quinn

T: 028 9038 8483

E: victor.quinn@osni.gov.uk

GI Strategy

Suzanne McLaughlin

T: 028 9038 8242

E: suzanne.mclaughlin@osni.gov.uk

